

THIS ETUDE IS PLAYABLE IN COMBINATION WITH OTHER INSTRUMENTS
OR AS A FULL BAND ARRANGEMENT.

MINNESOTA ALL-STATE JAZZ AUDITION ETUDE

BASS

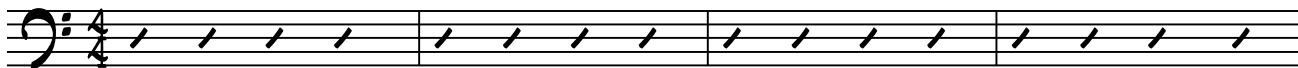
SET #1

DOUG RASMUSSEN

A SWING ♩ = 160
C⁹

F⁹

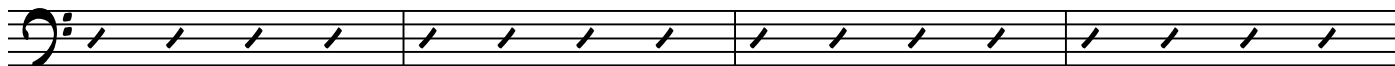
C⁹



E^b9

m[♯]

C⁹



5

G⁹

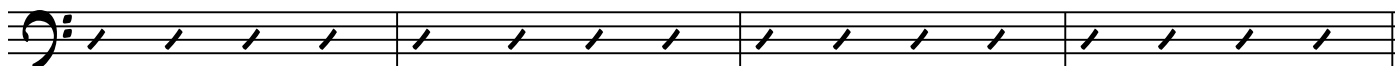
F¹³

E^m17

A⁷^{b9}

D^m17

G⁷^{b9}_{#5}

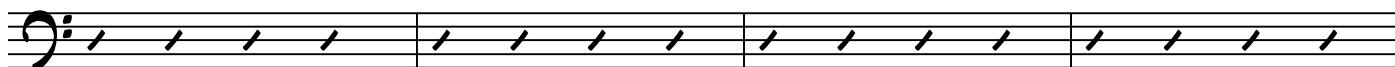


9

B C⁹

F⁹

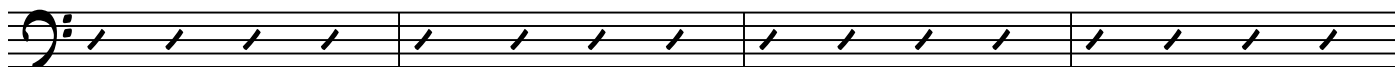
C⁹



13

E^b9

C⁹



17

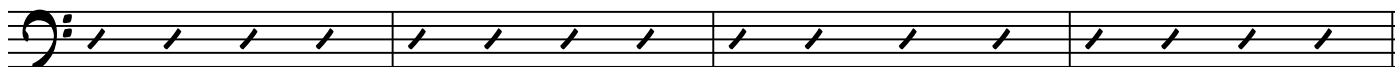
G⁹

F⁹

D^m17

G⁷^{b9}_{#5}

C⁹



21

C LATIN (STRAIGHT EIGHTHS)



25

♯



29



33



37

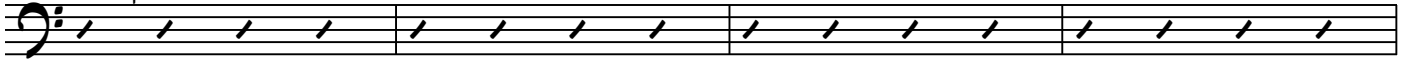
MINNESOTA ALL-STATE JAZZ AUDITION ETUDE BASS



C9
SWING

F9

C9

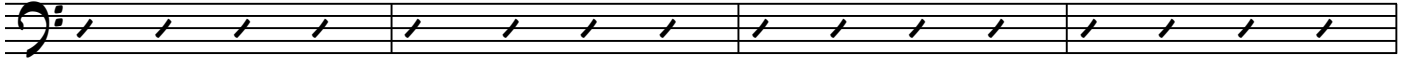


41

F#

Eb9

C9



45



49

F#